



## Zoning Resolution

THE CITY OF NEW YORK

Eric Adams, Mayor

CITY PLANNING COMMISSION

Daniel R. Garodnick, Chair

# **61-42 - Runways for Major Airports**

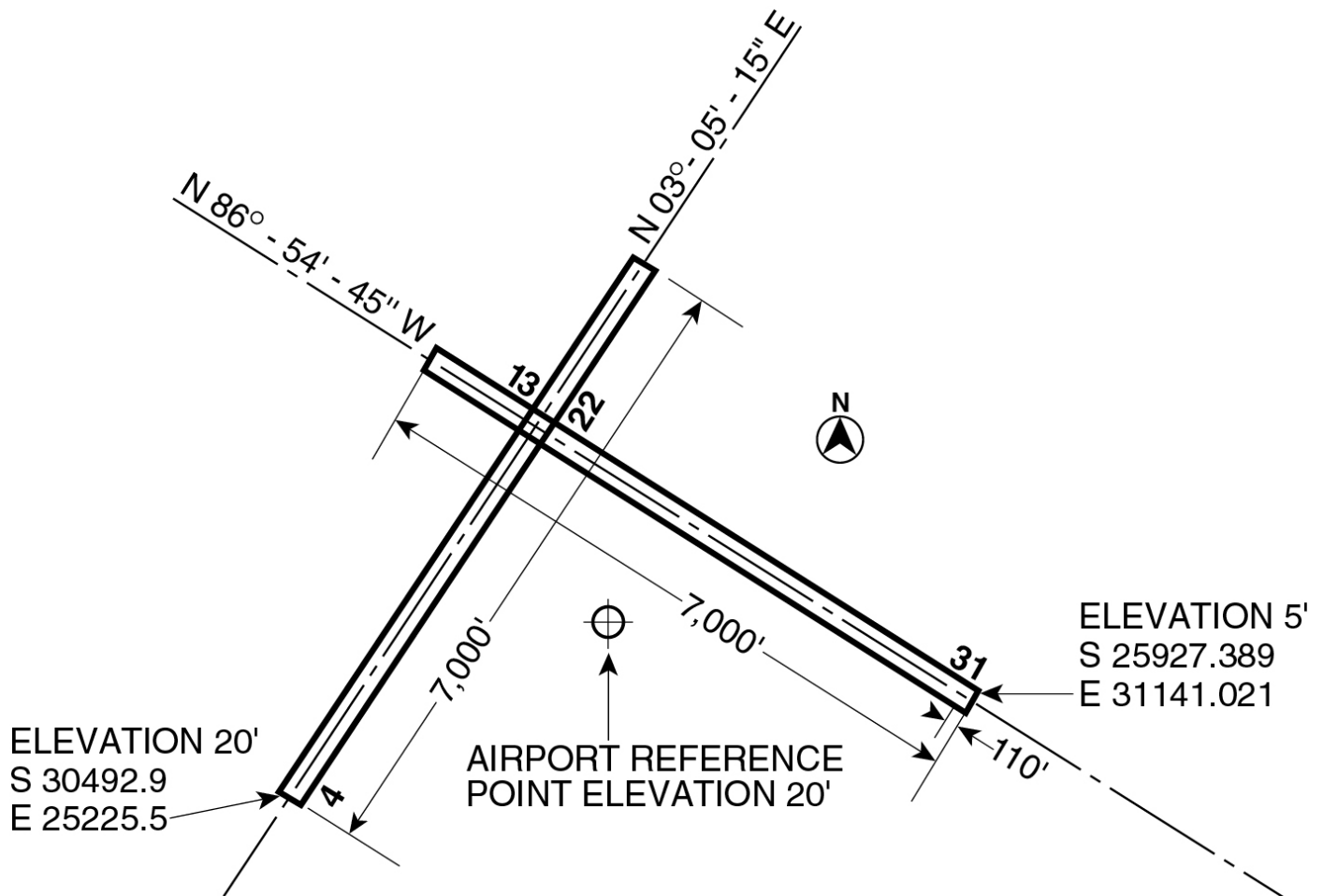
File generated by <https://zr.planning.nyc.gov> on 2/21/2025

## 61-42 - Runways for Major Airports

LAST AMENDED

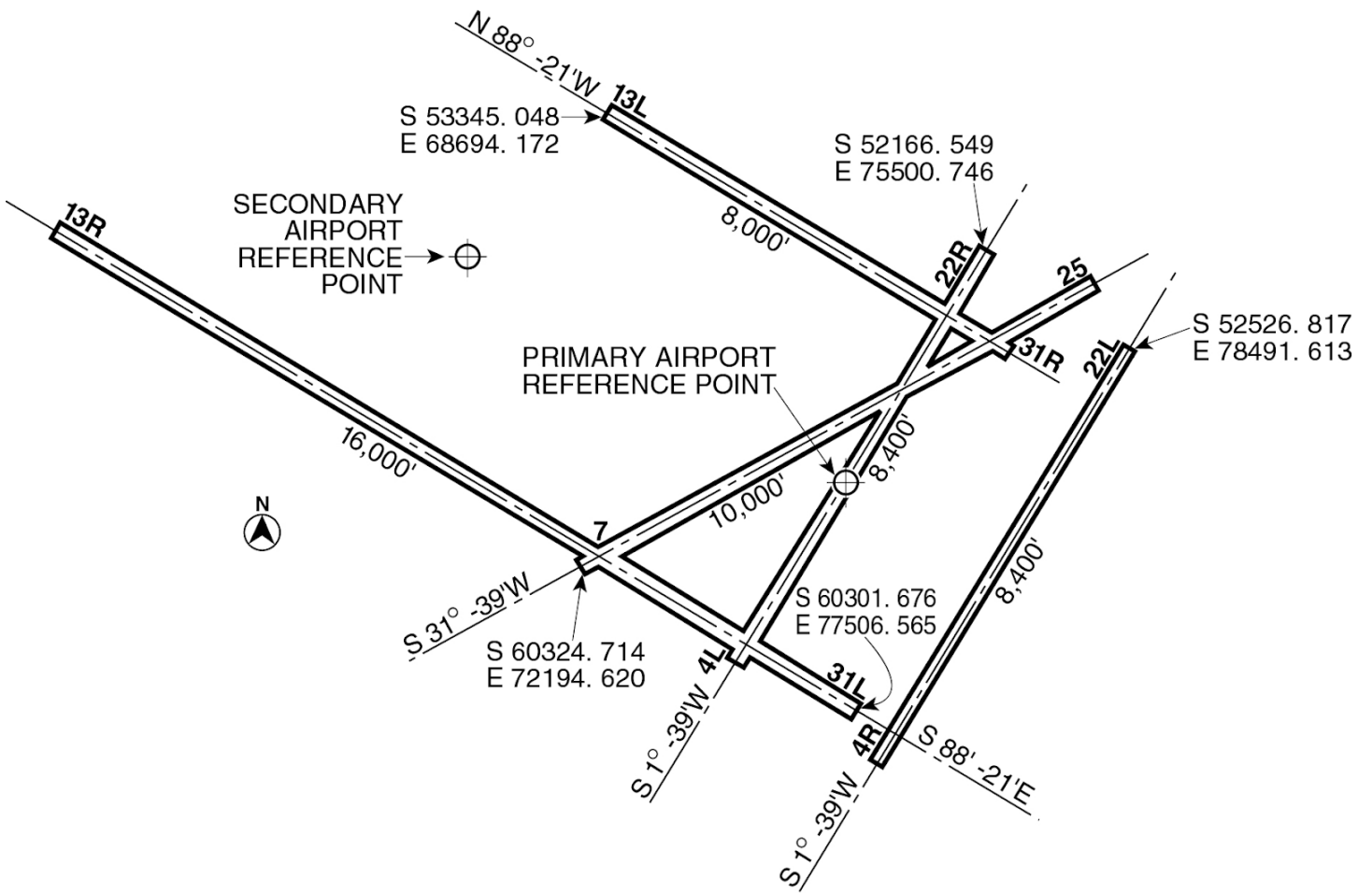
10/25/1993

The runways for each such major airport shall be the runways set forth in the following diagrams:



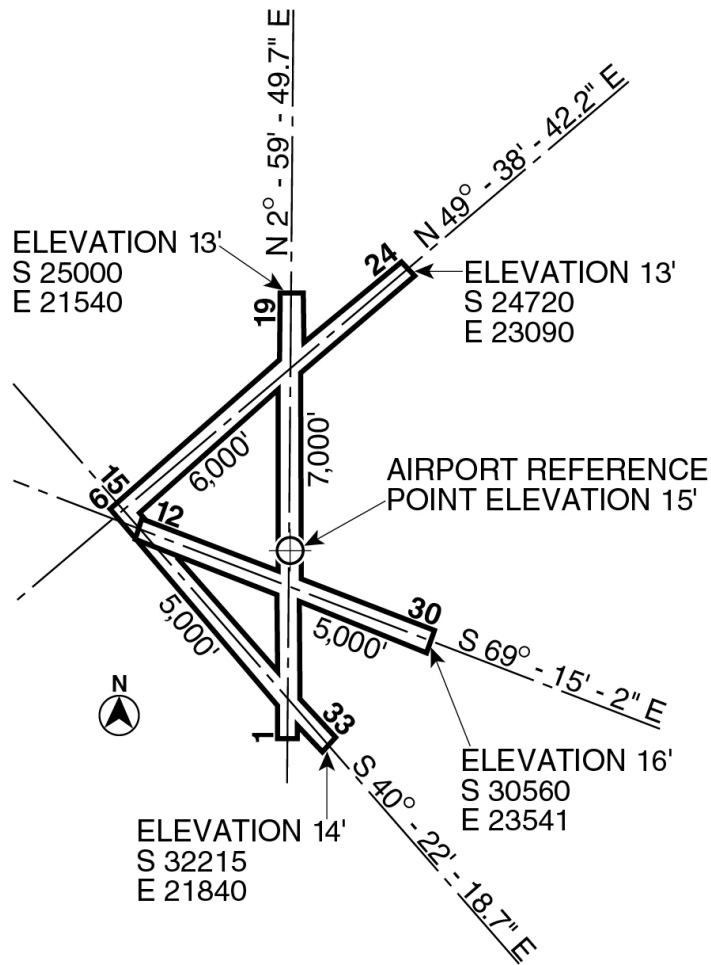
LaGUARDIA AIRPORT

Note: Coordinates shown refer to the U.S. coast and geodetic 10th Avenue base line. Elevations are above mean sea level.



J. F. KENNEDY INTERNATIONAL AIRPORT

Note: Coordinates shown refer to the U.S. coast and geodetic 10th Avenue base line. Elevations are above mean sea level.



U. S. NAVAL AIR STATION

(FLOYD BENNETT FIELD)

Note: Coordinates shown refer to the U.S. coast and geodetic 10th Avenue base line. Elevations are above mean sea level.