



Zoning Resolution

THE CITY OF NEW YORK
Zohran K. Mamdani, Mayor

CITY PLANNING COMMISSION
Sideya Sherman, Chair

61-40 - TABLES OR DIAGRAMS

File generated by <https://zr.planning.nyc.gov> on 4/2/2026

61-40 - TABLES OR DIAGRAMS

LAST AMENDED

12/15/1961

61-41 - Airport Reference Point, Established Elevation and Specified Radii

LAST AMENDED

10/25/1993

The #airport reference point# (or #points#), #established airport elevation#, and radii for the #horizontal# and #conical surfaces# for each such major airport shall be established as set forth in the following table:

APPLICATION TO MAJOR AIRPORTS

#Airport Reference Points(s)#	LaGuardia	John F. Kennedy International	U.S. Naval Air Station (Floyd Bennett Field)
-------------------------------	-----------	-------------------------------	--

Primary point:

North Latitude	40° 46'29.0"	40° 38'19.4"	40° 35'33.0"
----------------	--------------	--------------	--------------

West Longitude	73° 52'20.0"	73° 46'21.8"	73° 53'27.5"
----------------	--------------	--------------	--------------

Secondary Point:

North Latitude	-	40° 38'57.9"	-
----------------	---	--------------	---

West Longitude	-	73° 47'47.9"	-
----------------	---	--------------	---

#Established airport elevation# (feet above mean sea level)	20	12	15
---	----	----	----

#Horizontal surface# radius, measured in feet from #airport reference point(s)#	10,000	13,000	11,500
---	--------	--------	--------

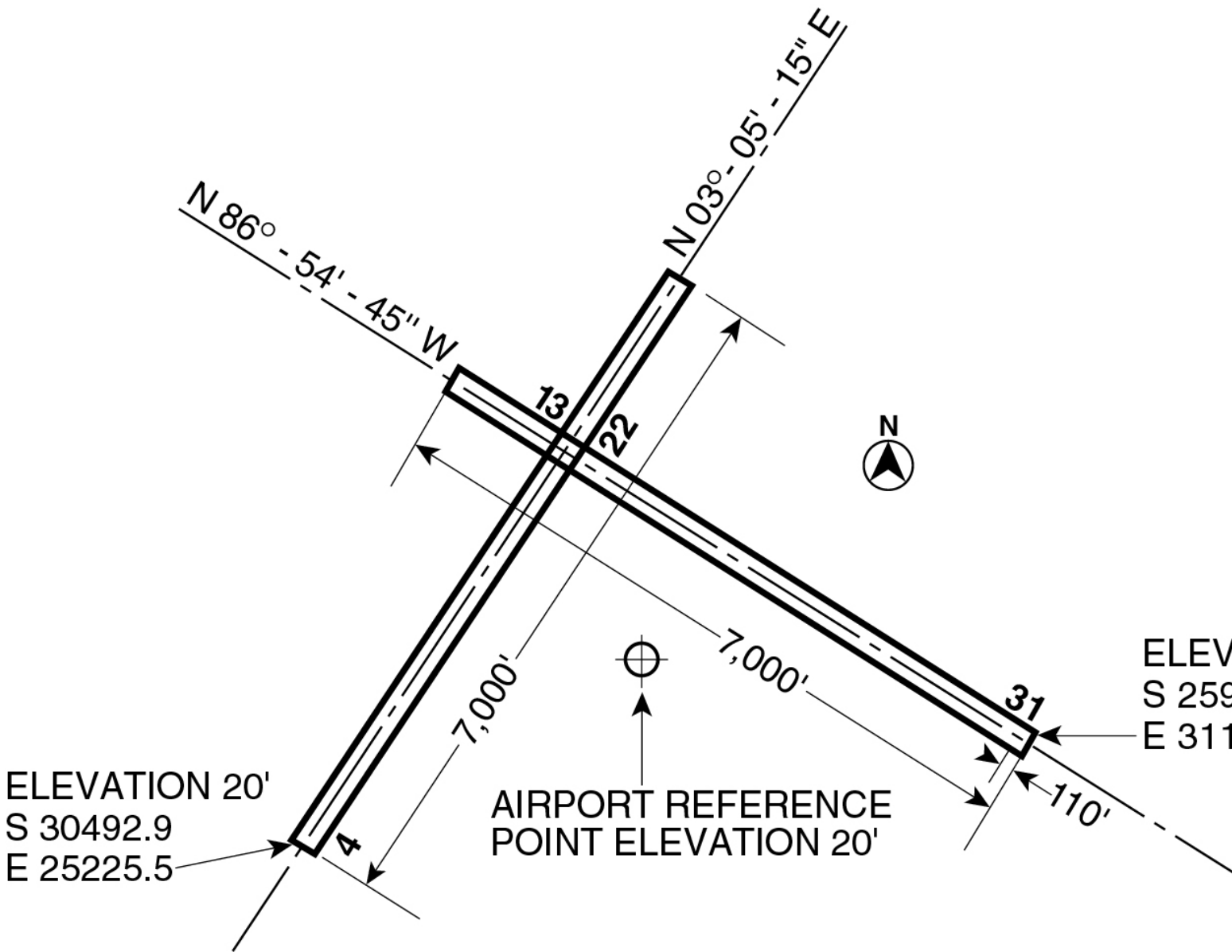
#Conical surface# radius, measured in feet from #airport reference point(s)#	15,000	20,000	18,500
--	--------	--------	--------

61-42 - Runways for Major Airports

LAST AMENDED

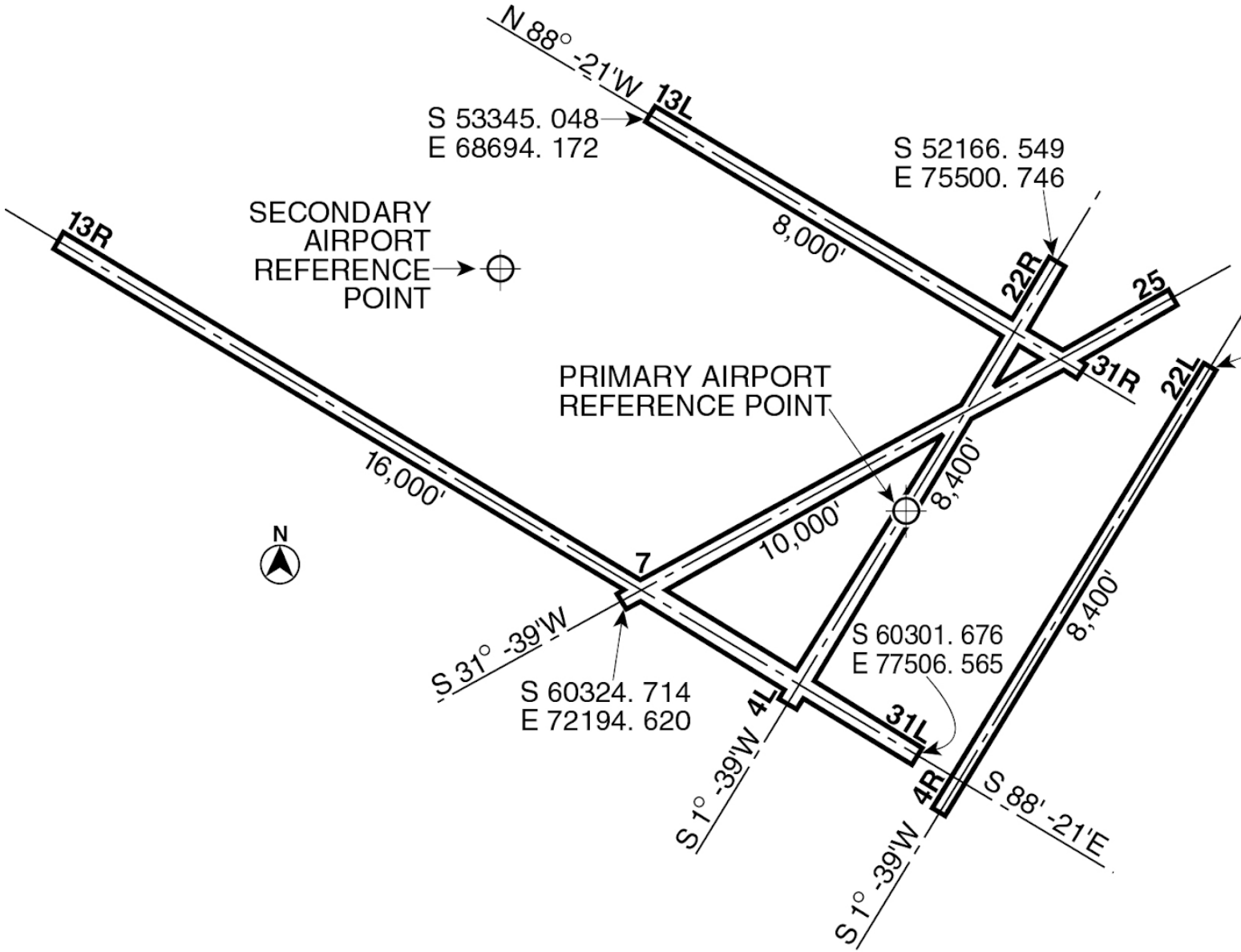
10/25/1993

The runways for each such major airport shall be the runways set forth in the following diagrams:



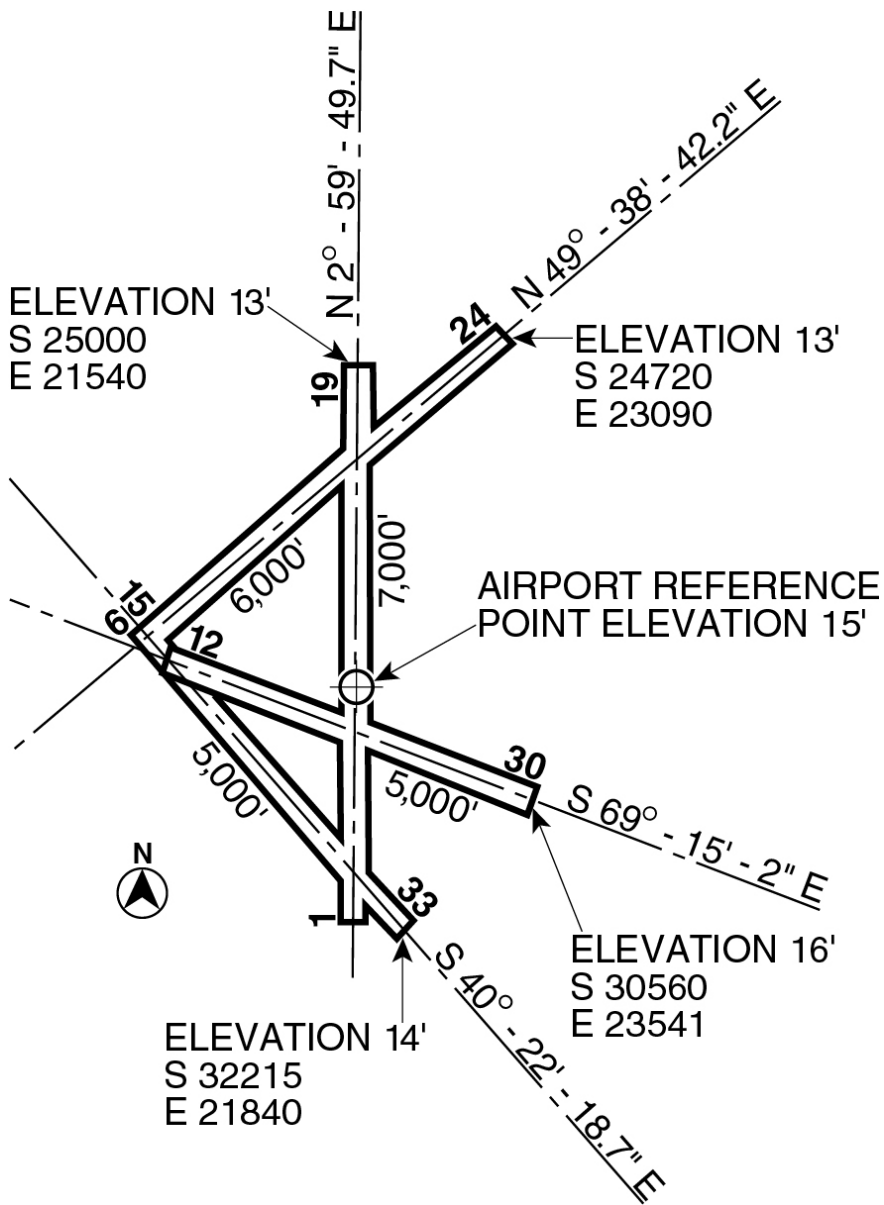
LaGUARDIA AIRPORT

Note: Coordinates shown refer to the U.S. coast and geodetic 10th Avenue base line. Elevations are above mean sea level.



J. F. KENNEDY INTERNATIONAL AIRPORT

Note: Coordinates shown refer to the U.S. coast and geodetic 10th Avenue base line. Elevations are above mean sea level.



U. S. NAVAL AIR STATION

(FLOYD BENNETT FIELD)

Note: Coordinates shown refer to the U.S. coast and geodetic 10th Avenue base line. Elevations are above mean sea level.